

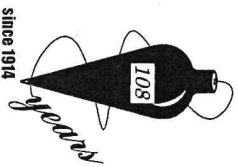
PROPERTY IN THE BOROUGH OF HILLSDALE, BERGEN COUNTY, NEW JERSEY

Location Survey of Dwelling on property known as Lots 13, 15, and part of Lot 11 in Block M as shown on a certain map entitled "Map of Lots and Villa Plots at Hillsdale on the Line of the Hackensack & Erie Railway. Bergen Co. N.J." and filed in the Bergen County Clerk's Office on June 14, 1870 as Map No. 147.

Certified to: DIMITRY BOSS, to be correct.

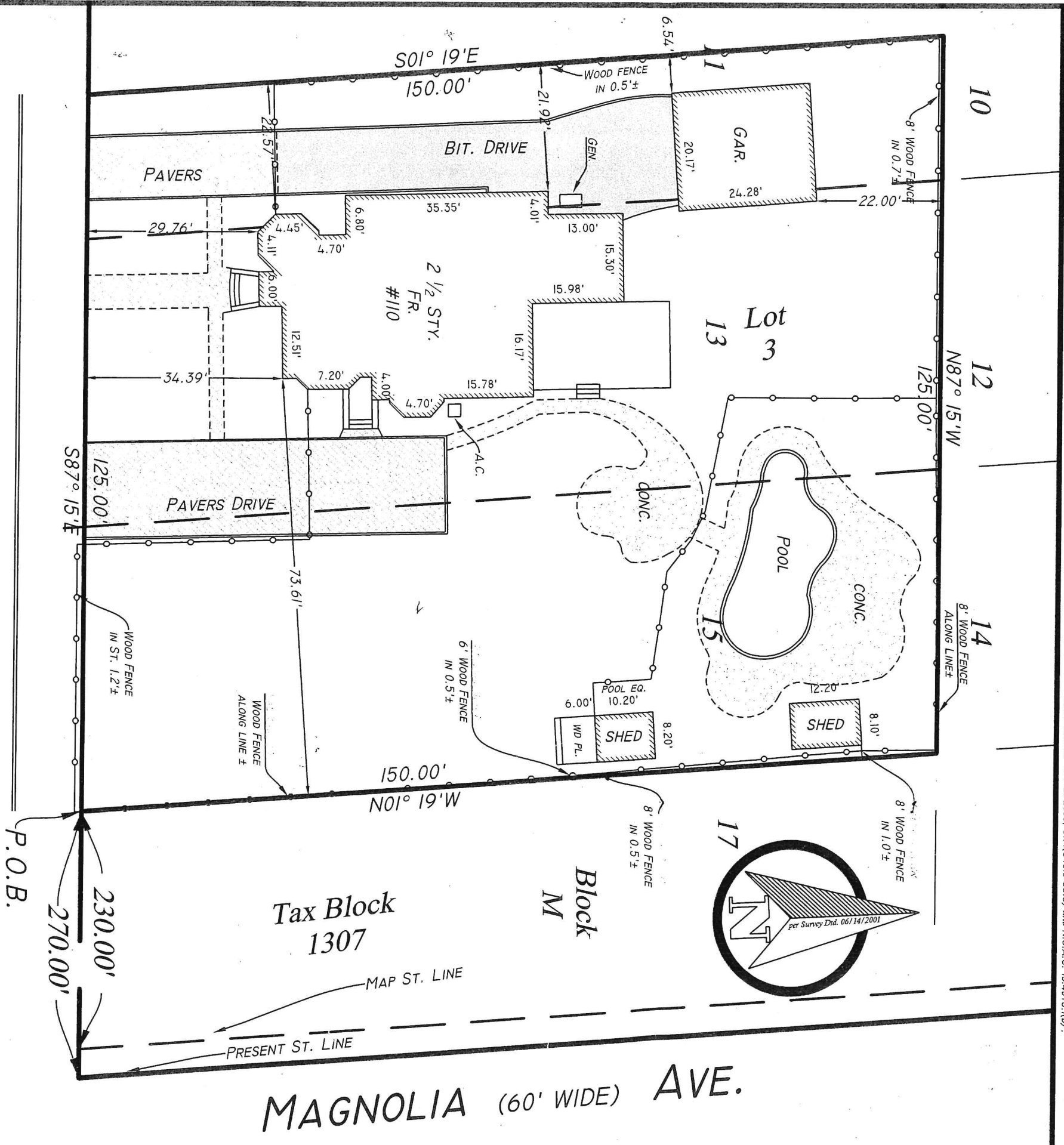
Scale: 1" = 20 feet

Being Lot 3 in Block 1307 on the Tax Map.



**STEVEN L. KOESTNER**  
 P.E. & L.S. NJ LIC. # 27901 / NY LIC. # 50865  
 KOESTNER ASSOCIATES  
 PROFESSIONAL ENGINEERS & LAND SURVEYORS  
 HACKENSACK, N.J. 07602  
 September 14, 2022

\*A WRITTEN WAIVER AND DIRECTION NOT TO SET CORNER MARKERS HAS BEEN OBTAINED FROM THE ULTIMATE USER PURSUANT TO P.L. 2003, C.14(C45-8-36.3) AND N.J.A.C. 13-40+5.10)\*



LAWRENCE (60' WIDE) ST.

MAGNOLIA (60' WIDE) AVE.

P.O.B.

230.00'  
270.00'

Tax Block 1307

Block M