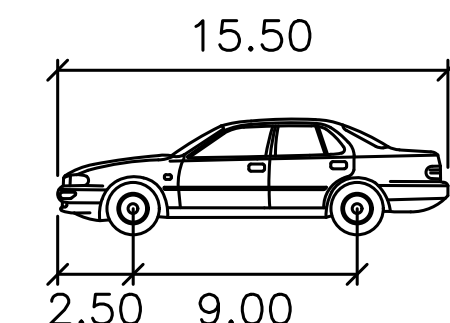
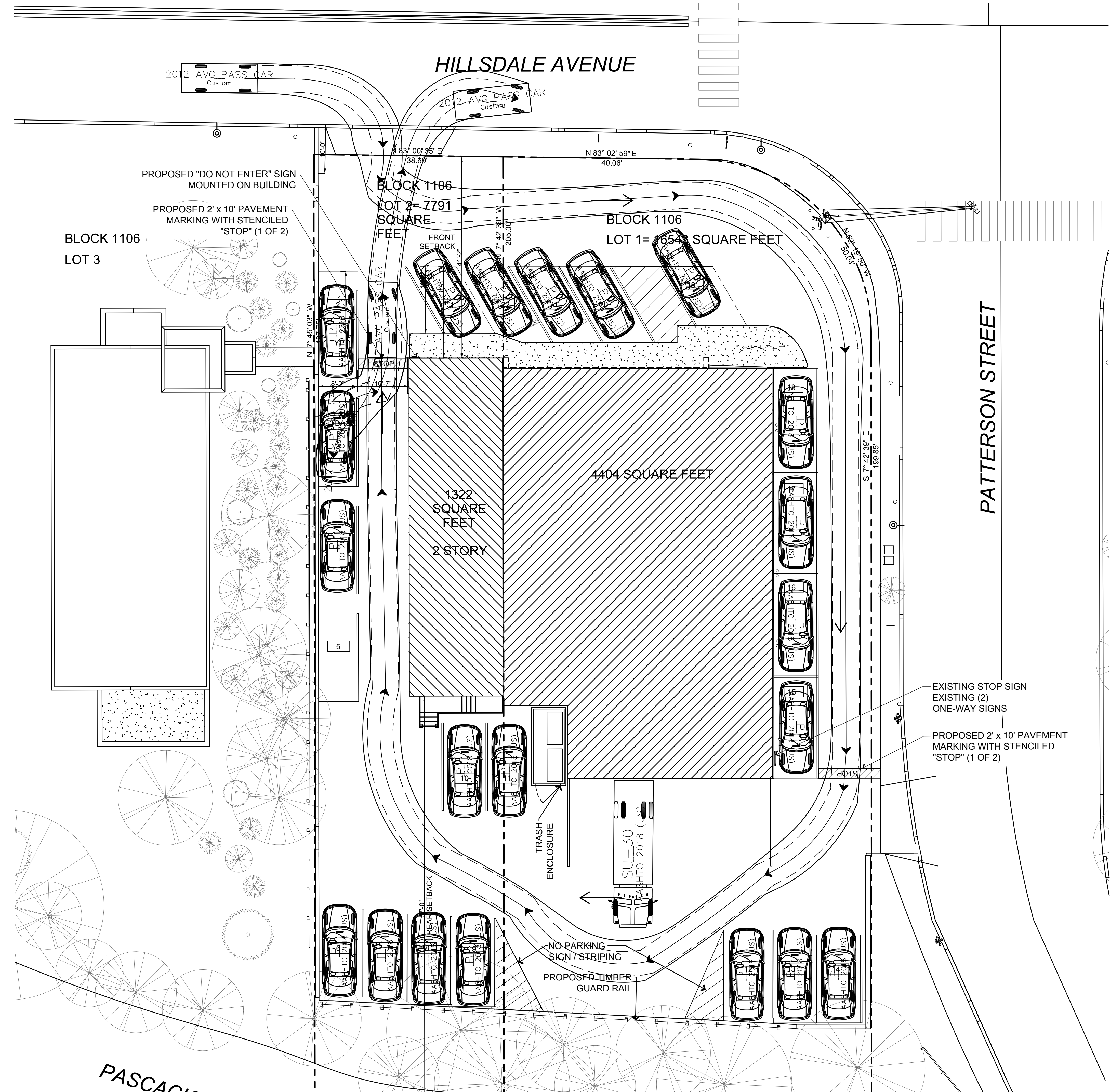


PROJECT:

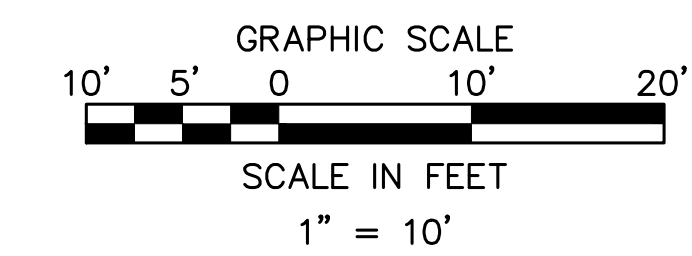
TIME: 7:48 PM

DATE: 10/15/2021



2012 AVG PASS CAR

Width : 5.90
Track : 5.42
Lock to Lock Time : 6.0
Steering Angle : 40.0



Date	Revision	Drawn By:	Checked By:
453 Hillsdale Avenue Block 1106, Lots 1 & 2			
Borough of Hillsdale		Bergen County	New Jersey
PASSENGERS CAR PLAN EXHIBIT 3			
KLEIN TRAFFIC CONSULTING, LLC www.kleintraffic.com 156 WALKER ROAD WEST ORANGE, N.J. 07052 PH: 973-885-3464 CERT. OF AUTH. # 246A28239000		Job #:	
		Scale: AS SHOWN	
Lee D. Klein LEE D. KLEIN, P.E. NJ PROFESSIONAL ENGINEER LICENSE NO. 246E03710400		Drawn By:	B.A.C.
		Checked By:	L.D.K.
		Exhibit:	3

KLEIN TRAFFIC CONSULTING, LLC
This drawing and all information contained herein is proprietary information of KLEIN TRAFFIC CONSULTING, LLC and may not be copied or reproduced, either in whole or in part, by any method, without written permission of KLEIN TRAFFIC CONSULTING, LLC.