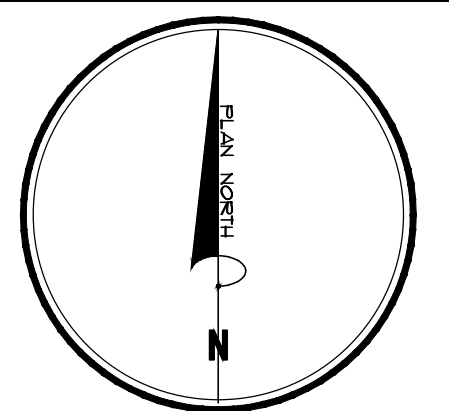


# PRESERVE AT HILLSDALE

## HILLSDALE, NEW JERSEY HOT BOX ENCLOSURE

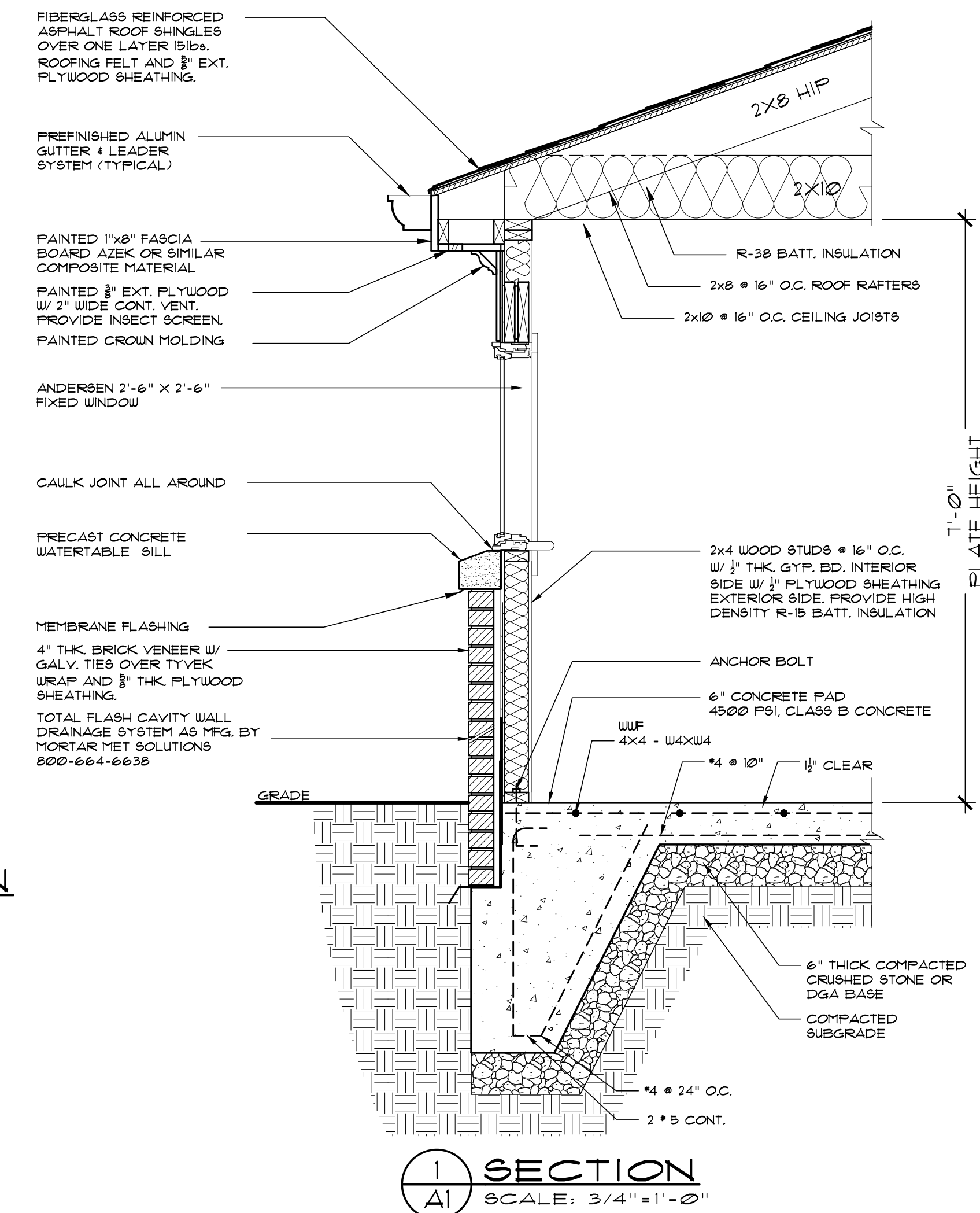
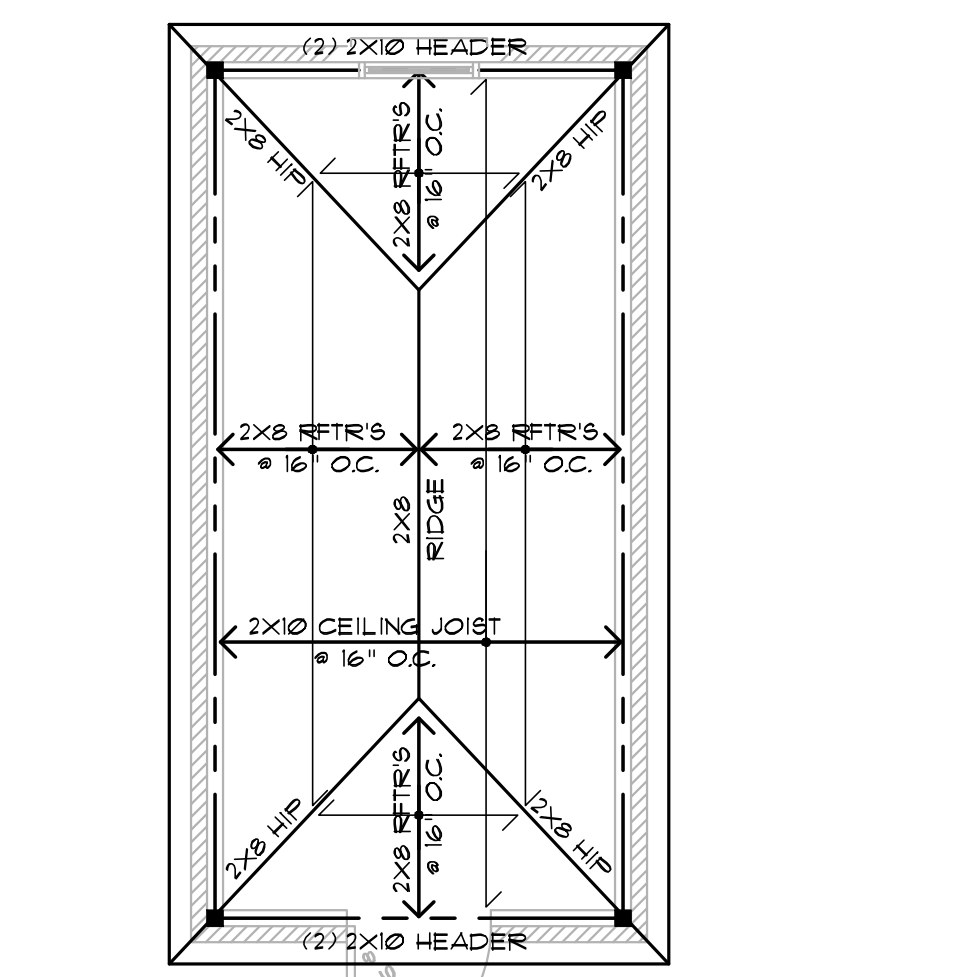
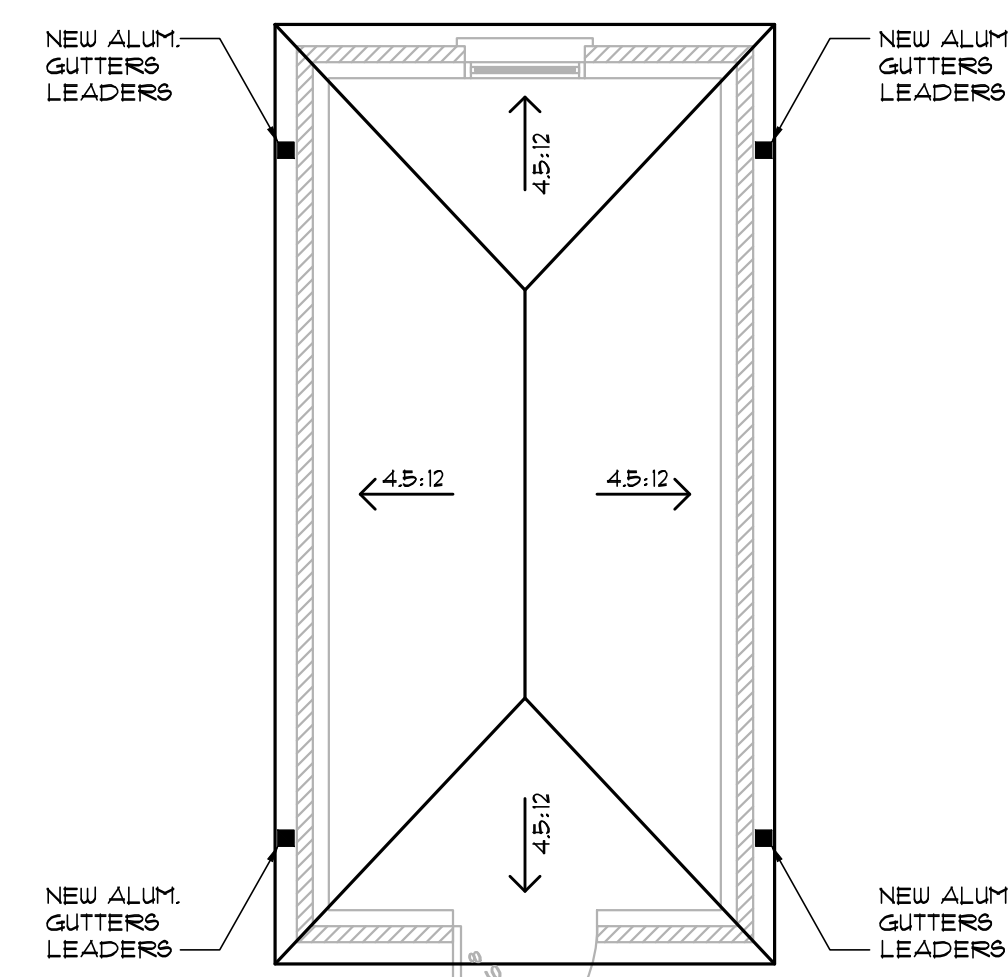
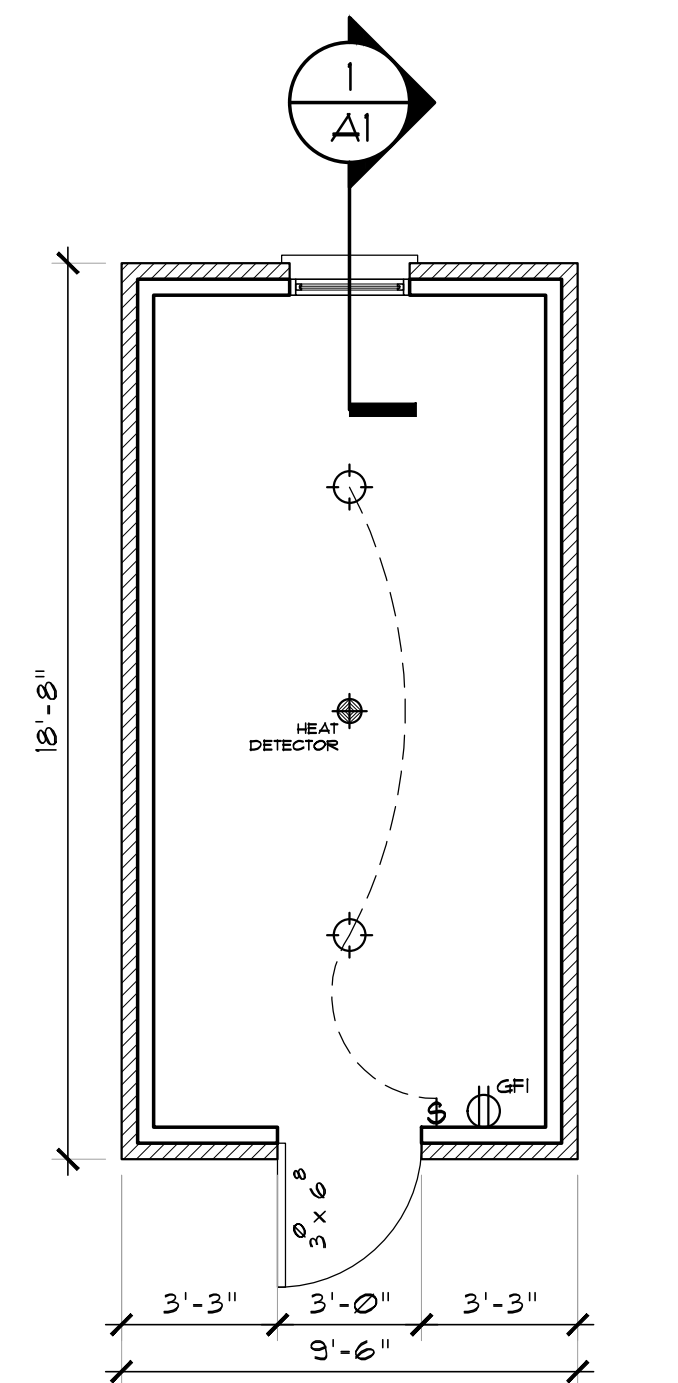
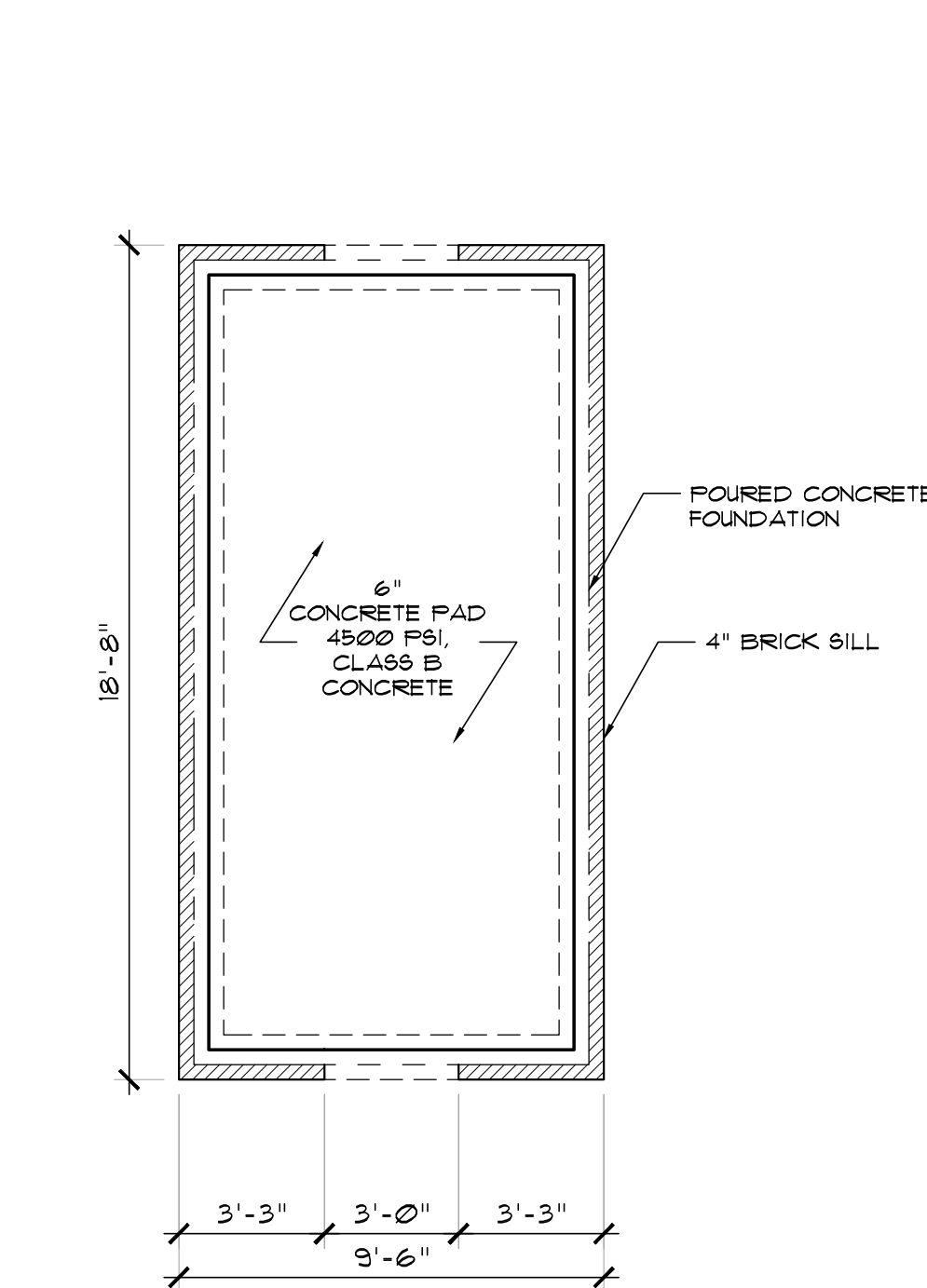
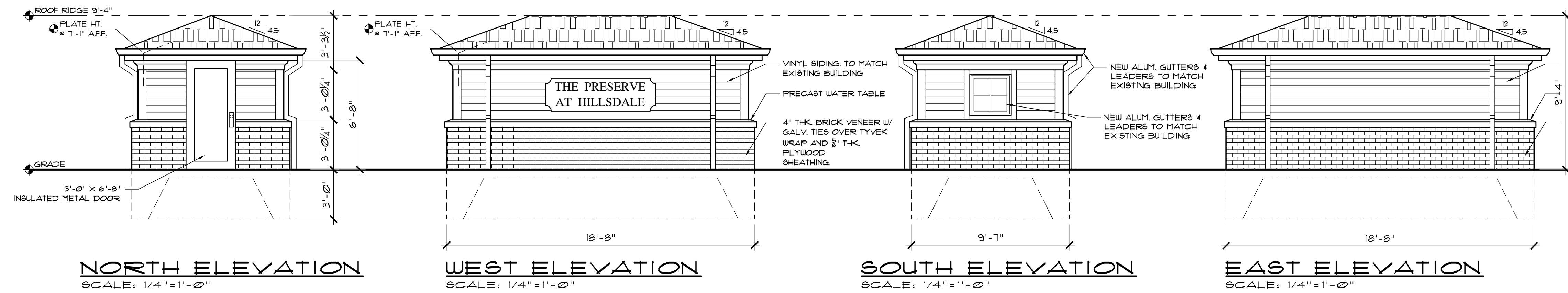


**ZAMPOLIN & ASSOCIATES**  
ARCHITECTS

181 FAIRVIEW AVENUE T 201 398 1166  
WESTWOOD, NJ 07675 F 201 398 1175

ROBERT E. ZAMPOLIN, A.I.A.

NJ	09185	MA	9115
CA	C 29924	NH	2561
CT	8131	NY	023110
DE	85-0005980	OH	10361
FL	AR-92823	PA	RA-013961-B
ID	AR-984585	SD	8553
IL	001-013391	VA	13321
IN	AR1000211	VT	2433
MD	10033	WY	C-1133



2015 INTERNATIONAL BUILDING CODE OF N.J. EDITION  
2015 INTERNATIONAL MECHANICAL CODE  
2015 ICC ENERGY CONSERVATION CODE

USE GROUP: R5  
CONSTRUCTION CLASS: 5B

FLOOR AREA: 174 SF.

TOTAL VOLUME: 1,479 CU. FT.

**ELECTRICAL LEGEND**

- ☉ CEILING MOUNTED LIGHT FIXTURE
- ⌚ WALL MOUNTED SINGLE POLE
- ⊕ 110 V. DUPLEX RECEPTACLE, GROUND FAULT INTERRUPTED (GFI), WITH RESET
- ⊕ HEAT DETECTOR CONNECTED TO FIRE ALARM SYSTEM

**NOTES:**

- UNLESS OTHERWISE NOTED, ALL HEADERS TO BE (3) 2x12, AT ALL WINDOWS, DOORWAYS AT EXTERIOR WALLS, PRECAST HEADERS, & (2) 2x12 @ INTERIOR WALLS
- DENOTES 4x4 WOOD POST POINT LOADS FROM ABOVE
- DENOTES 4x4 WOOD POST POINT LOADS TO BEARING BELOW
- ← → FRAMING DIRECTION
- ▨ BEARING WALLS
- INSTALL 2x4 @ 16" O.C. COLLAR TIES AT 1/2 ATTIC HEIGHT TYPICAL THROUGHOUT ATTIC

REVISIONS

DATE	REV. BY	REV. #	REVISIONS / SUBMISSION

PROJECT:  
**PRESERVE AT HILLSDALE**  
HILLSDALE, NEW JERSEY

DRAIN BY: JGE

REVIEWED BY: REZ

PROJECT NUMBER: B-003

SCHEMATIC SET	DATE:
PROGRESS SET	DATE:
BID SET	DATE:
PERMIT SET	DATE: 2-24-20
RECORD SET	DATE:

**ZAMPOLIN & ASSOCIATES**  
ARCHITECTS

HOT BOX ENCLOSURE

DRAWING NO. A1